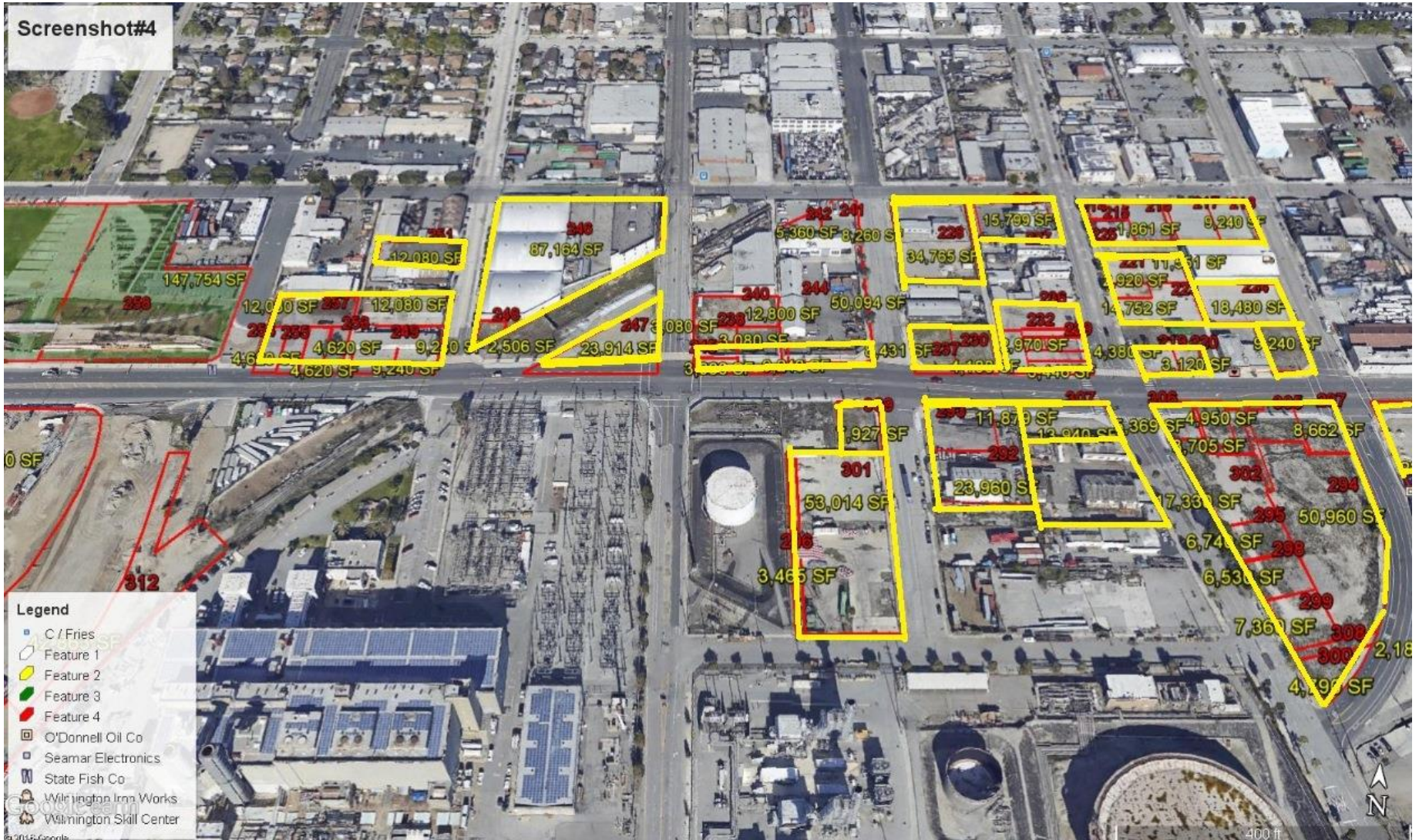


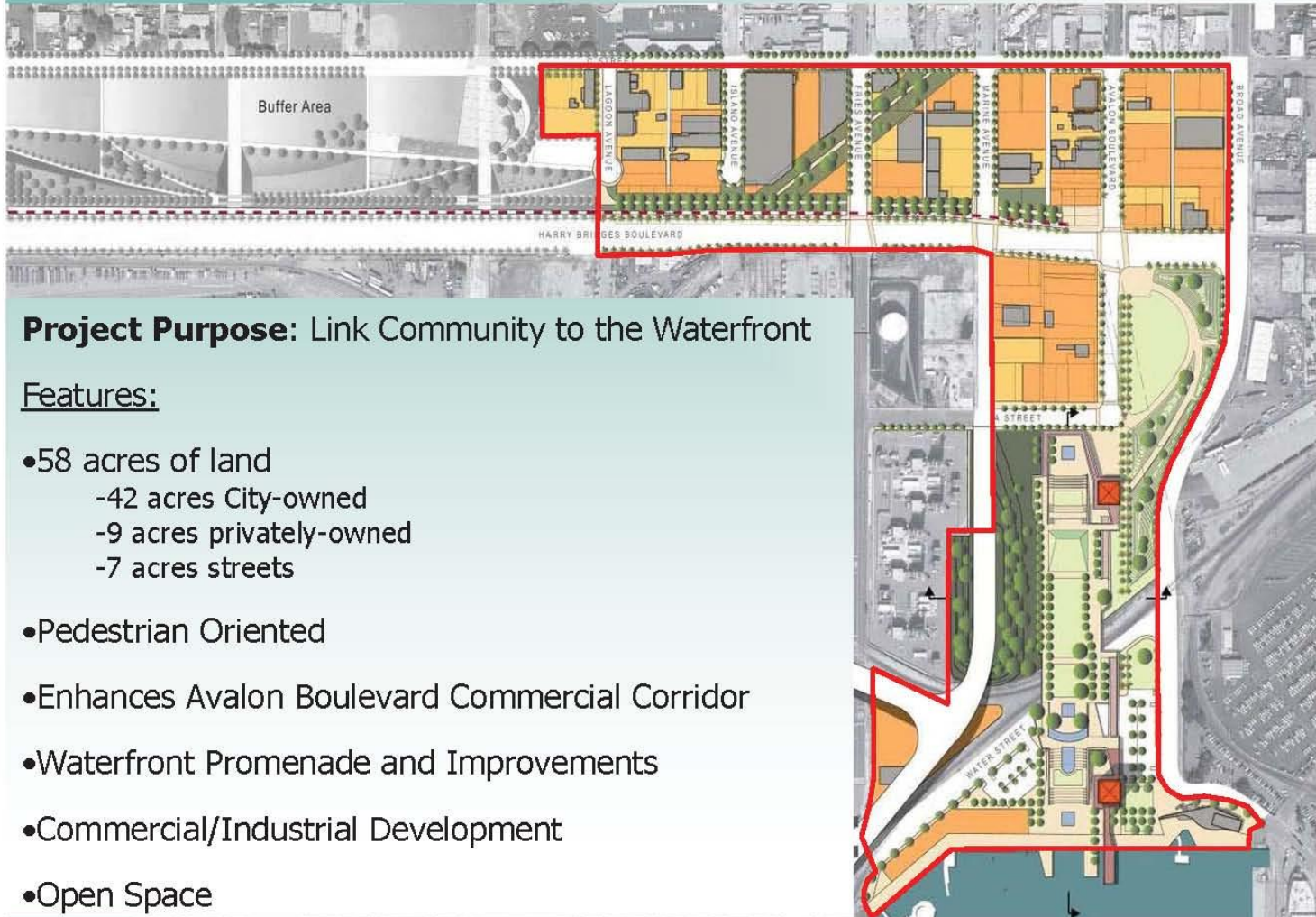


Screenshot#4





AVALON BOULEVARD CORRIDOR MASTER PLAN CONCEPT



Project Purpose: Link Community to the Waterfront

Features:

- 58 acres of land
 - 42 acres City-owned
 - 9 acres privately-owned
 - 7 acres streets
- Pedestrian Oriented
- Enhances Avalon Boulevard Commercial Corridor
- Waterfront Promenade and Improvements
- Commercial/Industrial Development
- Open Space



Wilmington
Waterfront
Master Plan

LEGEND
PIE

- PROGRAMMED OPEN SPACE
ESPACIO LIBRE PROGRAMADO
- NON-PROGRAMMED LANDSCAPE
AREA DE SEPARACION/
PAISAJE SIN PROGRAMA
- WALKS & PLAZAS
ACERAS Y PLAZAS
- RAMP TOWER
TORRE DE RAMPAS
- PORT-OWNED PROPERTY FOR FUTURE DEVELOPMENT
PROPIEDAD POSEYO POR EL PUERTO PARA DESARROLLO EN EL FUTURO
- PRIVATELY-OWNED PROPERTY
PROPIEDAD PRIVADA
- EXISTING BUILDINGS
EDIFICIOS EXISTENTES
- POTENTIAL RED CAR
POTENCIA DE COCHE ROJO

SASAKI
OCTOBER 24, 2006

