



Welcome To **BREA**



CENTER FOR
CREATIVE
LAND
RECYCLING

How do we transform this blight into a community amenity?

Nearly 2 miles of abandoned rail road right of way in the middle of town



Step 2: Community Engagement



Step 3:
Land Acquisition

The Tracks at Brea Land Acquisitions

Segment	Purchased From	Amount
1	City Owned	\$ -
2	Union Pacific Railroad	\$2,509,091
3	Union Pacific Railroad	\$7,889,314
4	Chevron	\$1,680,549
5	Chevron (Development Agreement)	\$ -
6(A)	Chevron	\$67,559
6(B)	Suzuki (Easement)	\$236,360
	Total	\$12,382,873

Step 4:

Grants... and more grants...

EPA

Transportation

- Caltrans Community Based Planning & Bicycle Transportation Account
- Safe Routes to School (state & federal)
- Active Transportation Program (ATP)
- Bicycle Corridor Improvement
- MSRC

State Parks

- Habitat Conservation Fund
- Land and Water Conservation Fund
- Recreational Trails Program

Urban Greening (Prop 84)

Housing Related Parks

26
Grants
\$17.5
Million

Step 5:

Internal Team Building & Partnerships

Internal City Team

- Project Manager
- Grant Writer/Administrator
- City Engineer & Engineering Division
- Traffic Engineer
- Community Development Director
- Financial Services Manager
- Public Works Director
- Parks Superintendent
- Community Services Director
- Community Services Manager
- Communications & Marketing
- City Manager
- Parks Commission
- Trails Task Force
- City Council

Partnerships

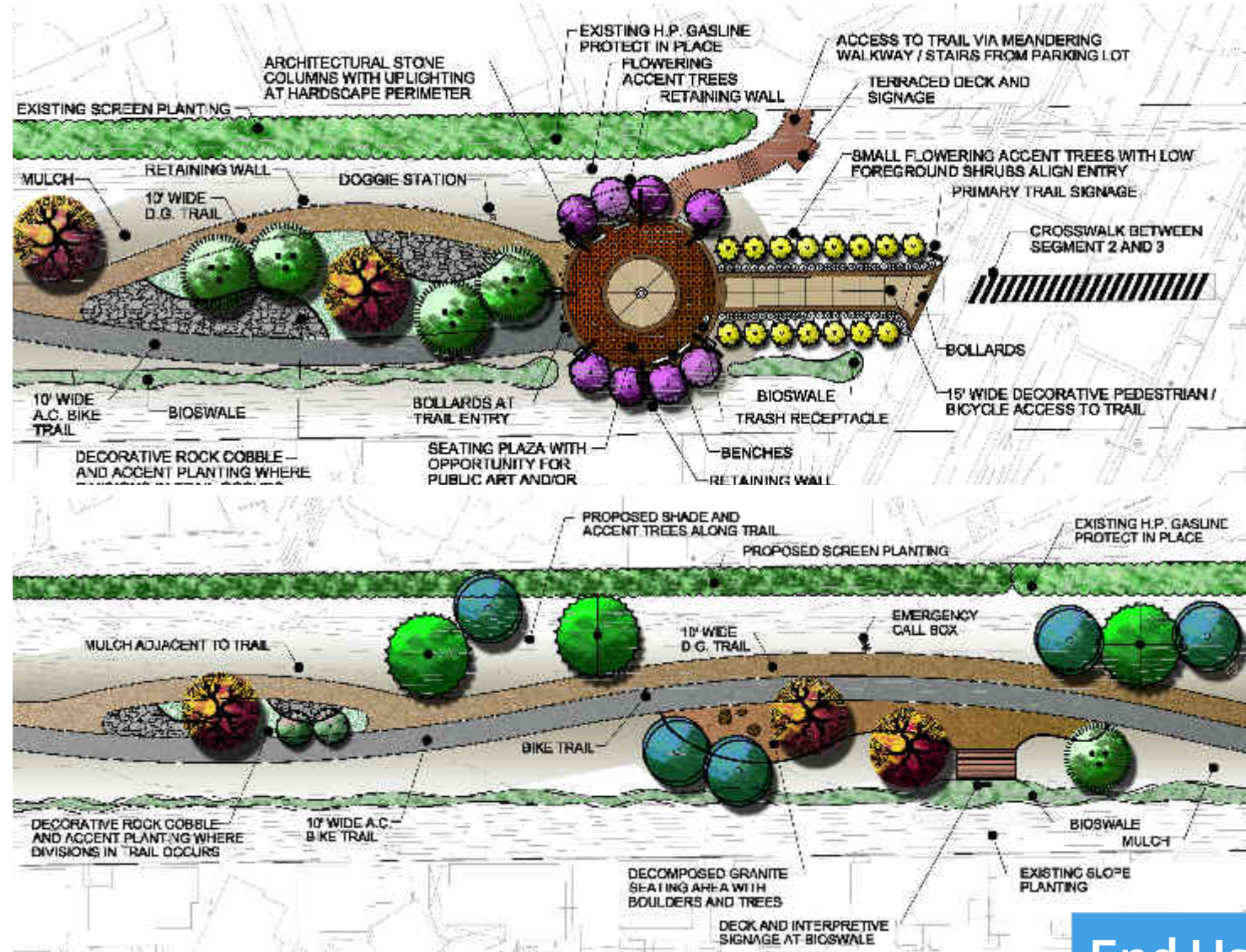
- OC Transportation Commission
- OC Health Care Agency
- OC Flood Control District
- Caltrans
- Townsend Public Policy
- Neighboring Cities

Step 6:
End Use Design



Artist Rendering

Step 6: End Use Design



End Use

Step 7:

- Construction



Step 8: Trail Opens!



Lessons Learned

- Find the best consultants for your project
...you have to kiss a lot of frogs...
- Get the Community Excited
- Build Relationships
- Be Persistent





Questions?