

# KENTUCKY HIGHLANDS PROMISE ZONE

## A SUMMARY OF INITIAL ACTIVITIES

KENTUCKY HIGHLANDS PROMISE ZONE



# PROMISE ZONE COUNTIES

- Bell County
- Clay County
- Harlan County
- Knox County
- Leslie County
- Letcher County
- Perry County
- Whitley County

# PROMISE ZONE FOCUS AREAS

- Creating Jobs
- Increasing Overall Economic Activity
- Improving Career Education Opportunities
- Reducing Drug-Related Problems
- Improving Broadband Access
- Improving Healthy Food Access

# PROMISE ZONE PLANNING PROCESS

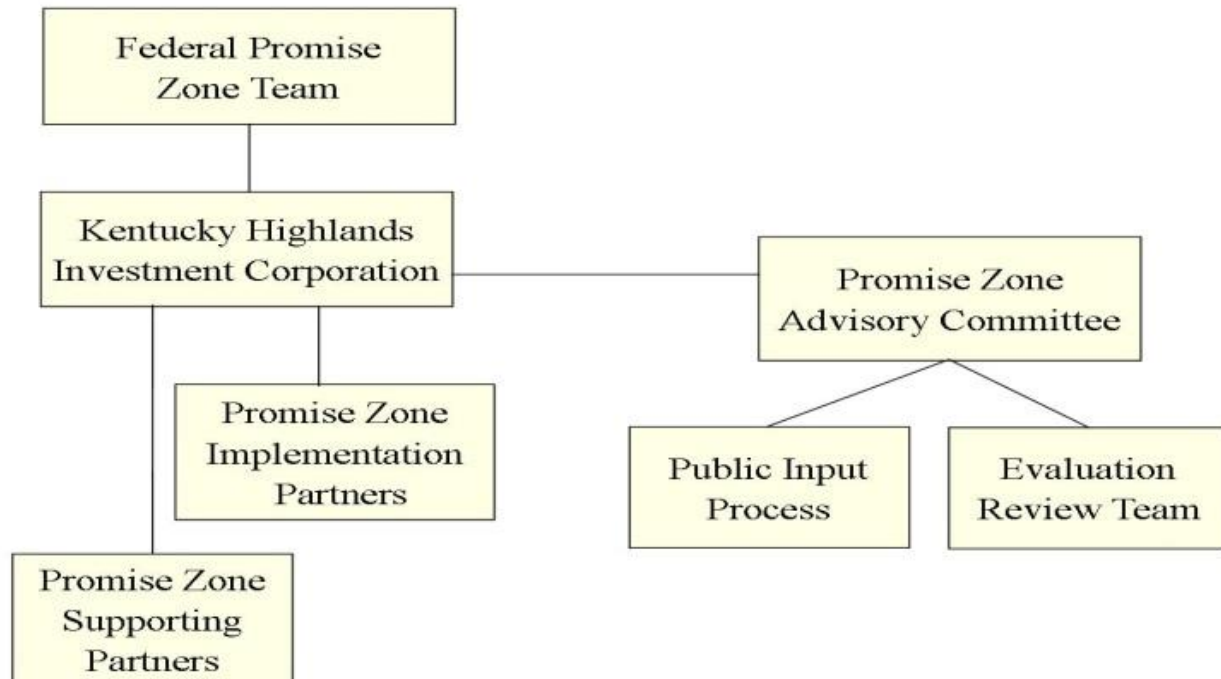
- Kentucky Highlands has contracted with the University of Kentucky CEDIT program to prepare a Strategic Plan by the end of May 2014
- CEDIT has completed two planning listening forums in each county as part of the process
- One session was for the general public and one was for young people in the community
- When the Strategic Plan is drafted, it will be reviewed and eventually adopted by the Advisory Committee
- The planning process includes public forums each year with the Strategic Plan being amended as needed

# IMPLEMENTING PARTNERS

- Cabinet for Economic Development – [www.thinkkentucky.com](http://www.thinkkentucky.com)
- CEDIK - <http://cedik.ca.uky.edu>
- The Center for Rural Development – [www.centernet.com](http://www.centernet.com)
- PRIDE – [www.kypride.org](http://www.kypride.org)
- Eastern Kentucky University CEDET – [www.cedet.eku.edu](http://www.cedet.eku.edu)
- Operation UNITE – [www.operationunite.org](http://www.operationunite.org)
- Federation of Appalachian Housing Enterprises – [www.fahe.org](http://www.fahe.org)
- Kentucky Education and Workforce Cabinet – [www.educationcabinet.ky.gov](http://www.educationcabinet.ky.gov)
- Hazard Community College Reach for the Top – [www.hazard.kctcs.edu](http://www.hazard.kctcs.edu)
- Kentucky Department for Local Government – [www.kydlgweb.ky.gov](http://www.kydlgweb.ky.gov)
- East Kentucky Concentrated Employment Program – [www.ekcep.org](http://www.ekcep.org)
- Berea College Promise Neighborhood – <http://www.berea.edu/esp/>
- KCEOC Community Action Partnership – [www.kceoc.com](http://www.kceoc.com)
- KY Education & Workforce Development Cabinet – [www.educationcabinet.ky.gov](http://www.educationcabinet.ky.gov)
- Hazard Community & Technical College – [www.hazard.kctcs.edu](http://www.hazard.kctcs.edu)
- Grow Appalachia – [www.berea.edu/ac/growappalachia](http://www.berea.edu/ac/growappalachia)

# PROMISE ZONE OPERATING STRUCTURE

## Kentucky Highlands Promise Zone Partnership Structure



# PROMISE ZONE ADVISORY COUNCIL

- Made up of a 17-member committee
- Role is to provide guidance to implement the program
- The chair of Kentucky Highlands acts a chair of the Advisory Committee
- Eight of the members are appointed by the County Judge/Executive
- Eight of the members are appointed by the Kentucky Highlands chairman



# PROMISE ZONE ADVISORY COUNCIL

- Bill Singleton, Chair
- Joe Asher, Clay County
- Joe Grieshop, Harlan County
- Denise Wainscott, Knox County
- Onzi Sizemore, Leslie County
- Jim Ward, Letcher County
- Randy Bailey, Perry County
- Amber Owens, Whitley County
- Albey Brock, Bell County
- Bo Green, Bell County
- Gayle House, Clay County
- Lonnie Riley, Harlan County
- Bob Mitchell, Knox County
- Rhonda Brashear, Leslie County
- Tina Whitaker, Letcher County
- Scott McReynolds, Perry County
- Jane Carter, Whitley County

# FEDERAL AGENCIES WITH PRIORITY POINTS

- Agriculture – Community Facilities Grant; Self-Help 523 TA; Housing Preservation; RCDI
- Commerce – Economic Development Assistance
- Education – Supplemental Priority for a variety of programs, including Promise Neighborhoods, School Climate Preservation Grants, GEAR UP and others
- VISTA – 5 members assigned to the Zone; Social Innovation Fund

# FEDERAL AGENCIES WITH PRIORITY POINTS

- HUD – Choice Neighborhoods
- SBA – Micro-Entrepreneurship Initiative; HUB Zone; Women’s Business Center Training
- DOJ – Byrne Criminal Justice; COPS Hiring
- DOL – Opportunity Youth; YouthBuild; Ex-Offenders
- HHS – Community Health Centers; CSBG; Healthy Start; Assets for Independence