



2025 California Land Recycling Conference – Topic Talk

Guam's Green Parcels Program: Revitalizing Lands with History and Purpose



TODO Y NILALA Y TANO MAN UNO
ALL LIVING THINGS OF THE EARTH ARE ONE

By: Chie Takase & Tasi Castro
Guam Environmental Protection Agency

Why Guam? What makes Guam Unique?



Guam

- **Location:**

Guam is a U.S. territory located in the Western Pacific Ocean

- **Population:**

168,394

- **Climate:**

Tropical with an average daily temperature of 85°F

- **Size:**

32 miles long and ranges from 4 to 8 miles in width





AGENCY OVERVIEW

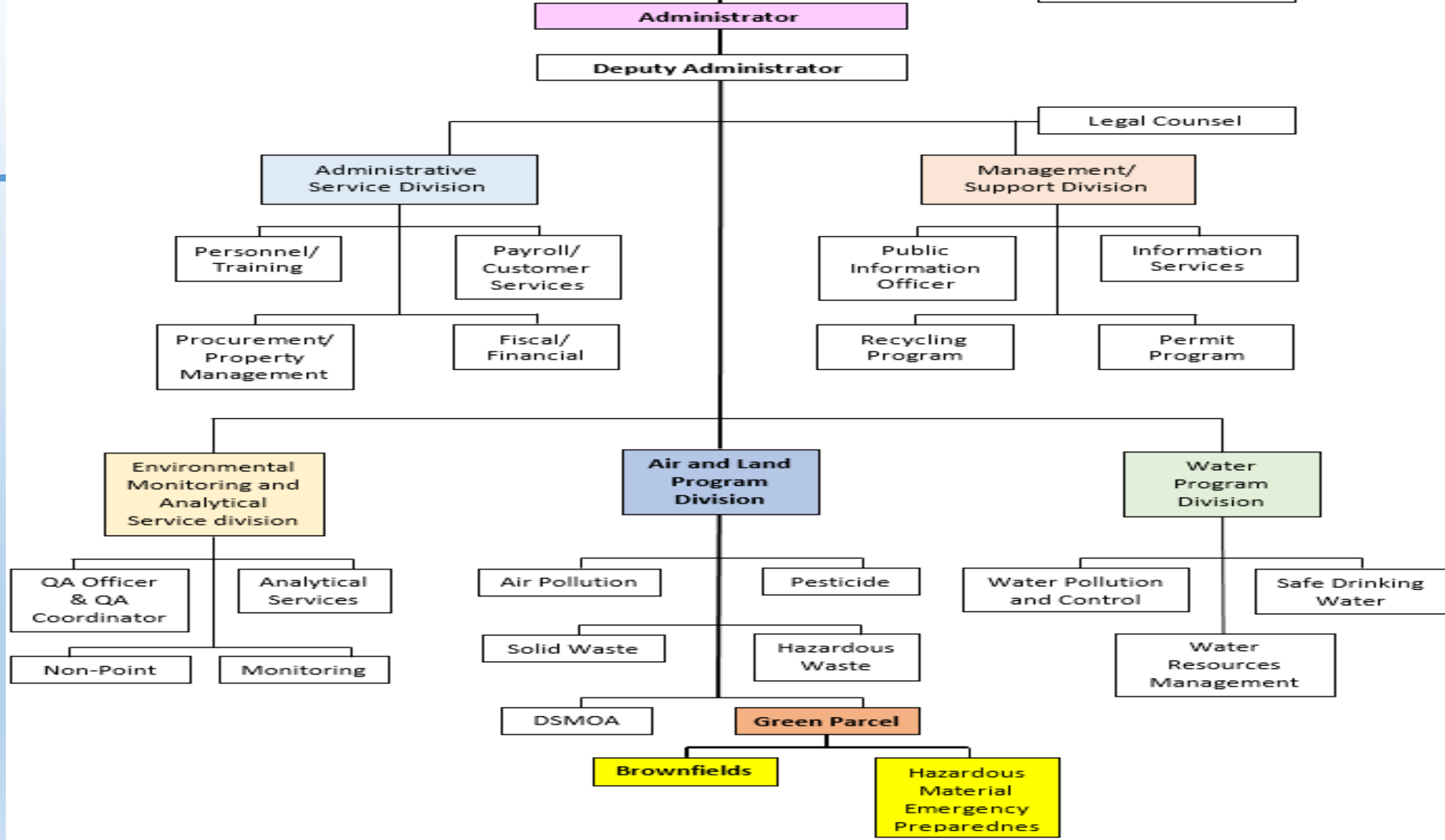
Guam EPA is a semi-autonomous agency of the Government of Guam. The Agency's Board of Directors are appointed by the Governor and confirmed by the Legislature. The Board of Directors then serve three-year terms and establish policies for the Agency. The Board meets approximately once a month and meetings are open to the public.

By law, the Guam EPA Board of Directors also serve as an appellate body. Any citizen who believes he or she has been aggrieved by an action or decision of the Guam EPA Administrator can request a hearing before the Board.



STRUCTURE

- Guam EPA has 4 divisions that carry out the mission and vision of the Agency. These divisions include:
- [Administration](#)
- [Environmental Monitoring and Analytical Division](#)
- [Water Division](#)
- [Air and Land Division](#)





Success Story #1

- Harmon Loop Transition Site





Success Story #2

- Former Naval Gymnasium Site





Green Parcels Program

- **Guam EPA Future Headquarter Cleanup**

- **Located at the Old Dededo Transfer Station**

- The site is approximately 9.7 acres
- Operated from 1984 to 2015

- **Property Information**

- The property was utilized as a waste transfer station and has been used during multiple typhoons.

Ex.) typhoon debris, solid waste, and household hazardous waste





Green Parcels Program



2004



Green Parcels Program



2014



Green Parcels Program



2020



Green Parcels Program



- **Guam EPA Future Headquarter Cleanup**
 - **Phase I and Phase II ESA**
 - Target Brownfields Assessment
 - The Phase I assessment identified the RECs
 - Northern side: past recycling use, contamination present
 - Area abandoned, prone to illegal dumping
 - Mixed waste (metal, vehicle, tires, garbage)
 - Historical waste storage
 - Possible soil and groundwater impacts



Green Parcels Program



- **Guam EPA Future Headquarter Cleanup**

- **Phase I and Phase II ESA**

- Target Brownfields Assessment
- The Phase II ESA sampling results confirmed the presence of contaminants in soil at the site.

Soil was contaminated with heavy metals (lead, arsenic, chromium, copper, thallium, zinc), chlordane, and polychlorinated biphenyls (PCBs)





Green Parcels Program



- **Guam EPA Future Headquarter Cleanup**
 - **Cultural & Biological Review**
 - Section 106 and archaeological monitoring
 - Biological survey
 - **Cleanup Progress**
 - Time-Critical Removal Action
 - 10 waste pile areas identified on site.
 - ~31,000 cubic yards of waste to be excavated and disposed
 - Large debris, tires, and gas cylinders were separated before soil treatment



Green Parcels Program





Green Parcels Program



2024



Green Parcels Program

Challenges

- Funding
 - 1st action: May 2024
 - 2nd action: April 2025
- Natural Disaster
 - LA Wildfire Activation demobilized our team causing the project to be pushed back again



Green Parcels Program





Green Parcels Program





**For more information, please
contact:**

Chie Takase

Chie.takase@epa.guam.gov

Tasi Castro

Tasi.castro@epa.guam.gov

Green Parcels/ HMEP program

Thank You and *Si Yu'os Ma'åse'*